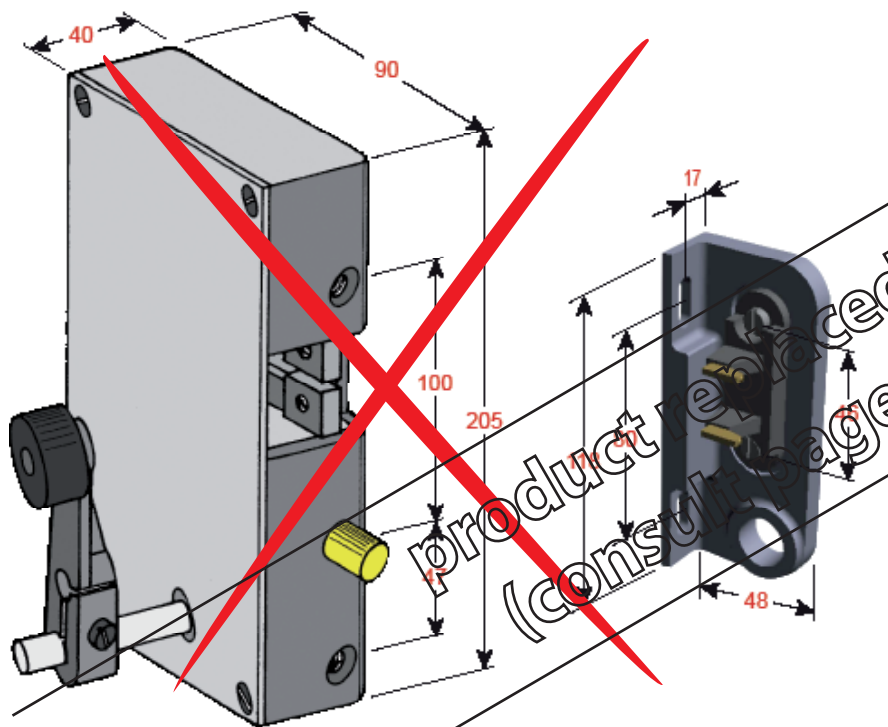


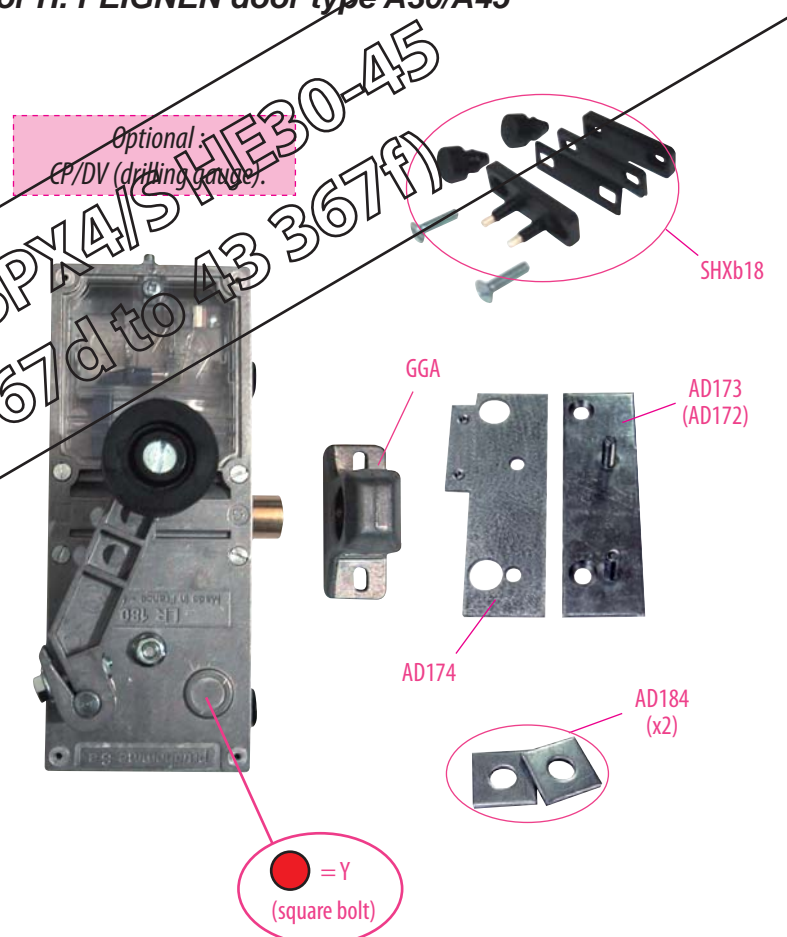
To replace :
Lock HE1-HE2 (Schindler)
on sliding door.



Substitution :

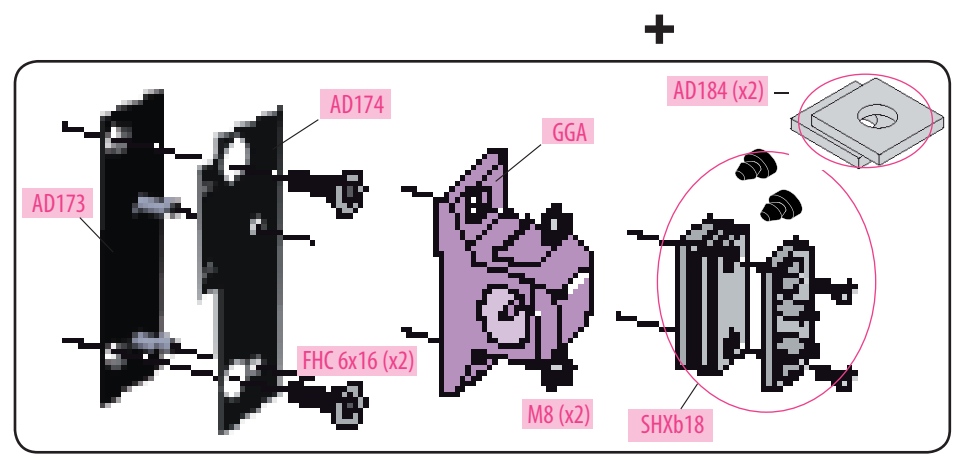
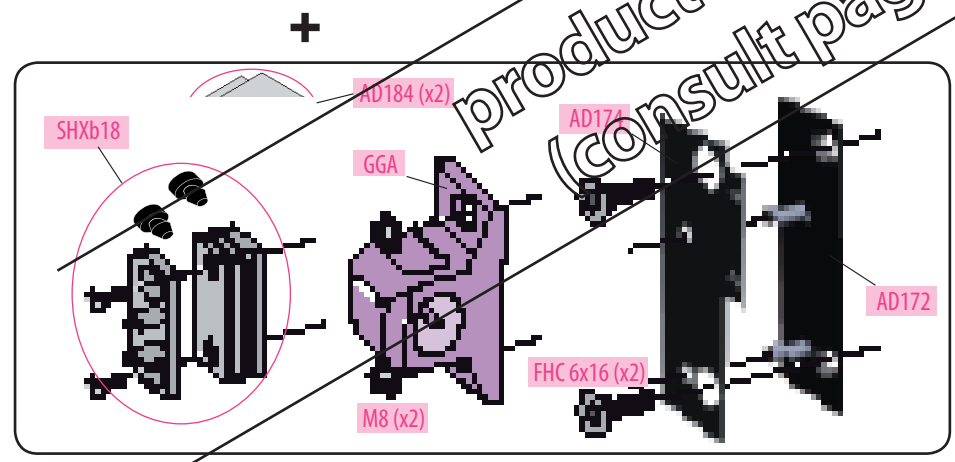
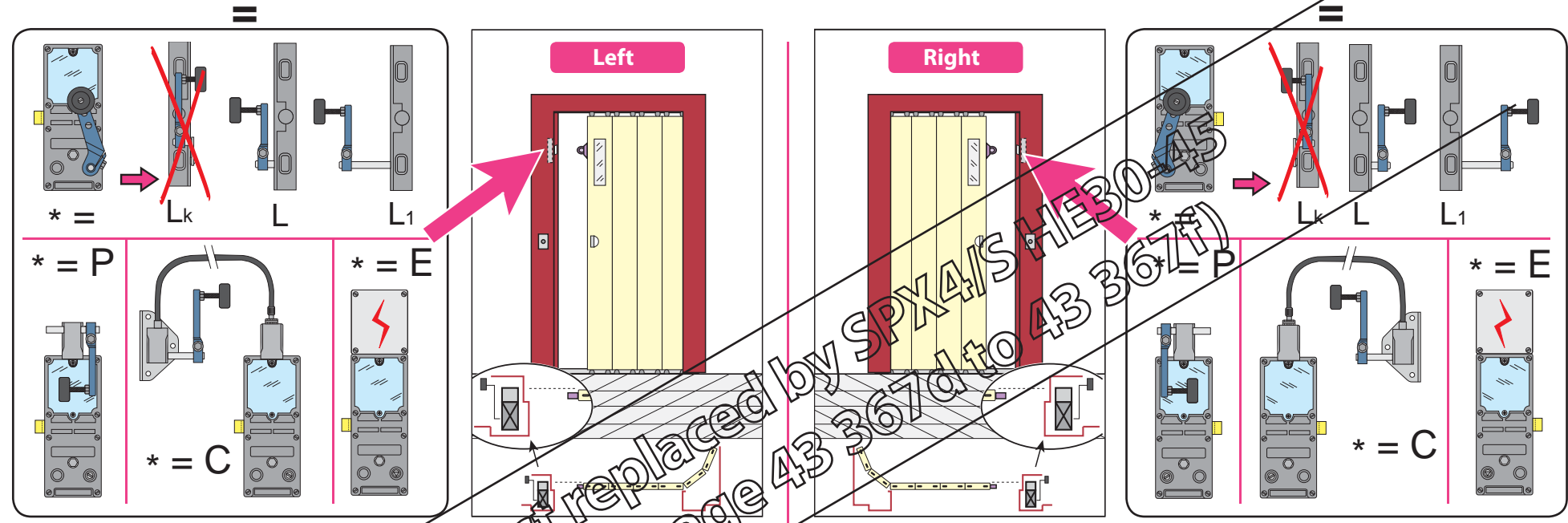
LR 180 ** HE30/45 prudhomme S.a

for H. PEIGNEN door type A30/A45

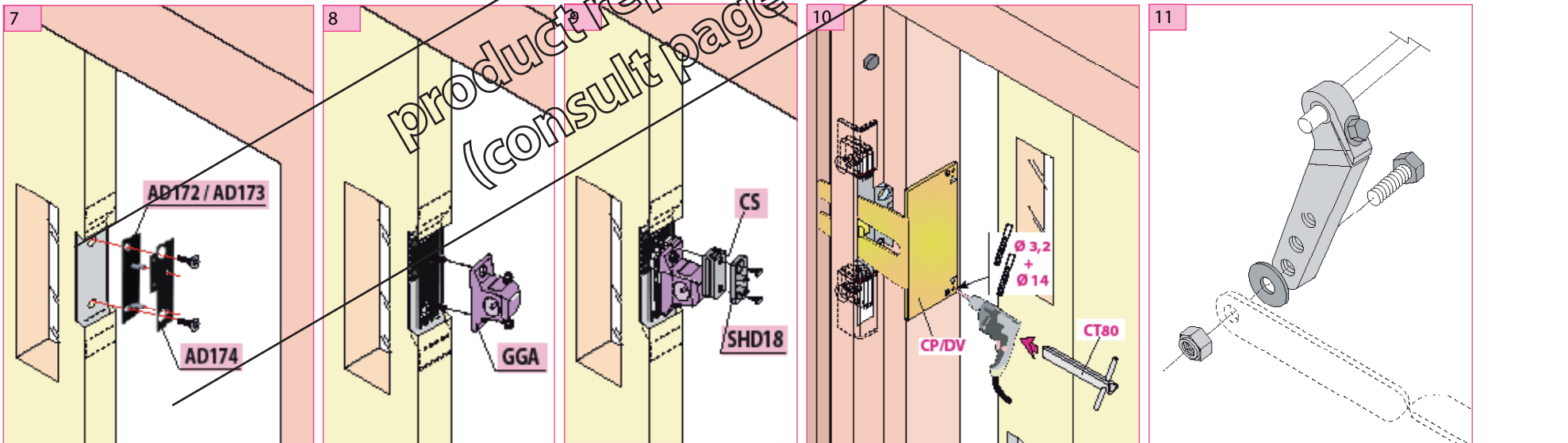
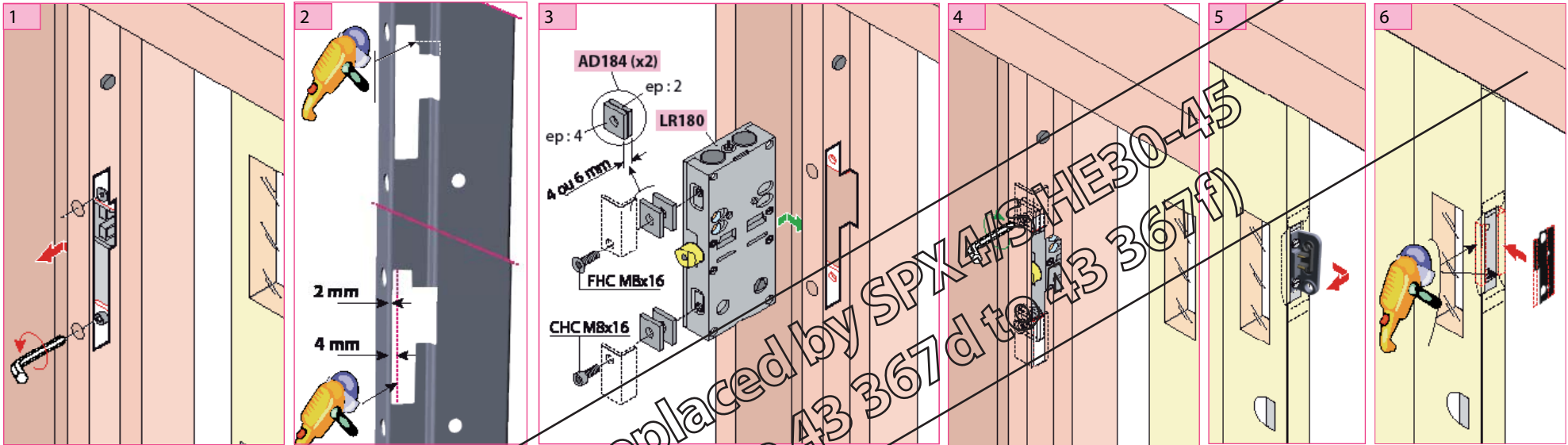
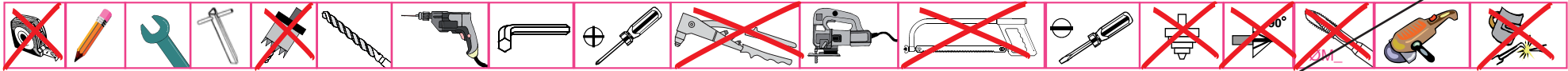


réf. : LR180 *G HE30/45

réf. : LR180 *D HE30/45



Mounting stages



product replaced by SPX45/HE30-45
 (consult page 43 367 d to 43 367 f)